

AGENDA SUPPLEMENT (1)

Meeting: Westbury Area Board
Place: The Laverton, Bratton Road, Westbury BA13 3EN
Date: Thursday 6 October 2016
Time: 7.00 pm

The Agenda for the above meeting was published on Tuesday 27 September 2016. Additional documents are now available and are attached to this Agenda Supplement.

Please direct any enquiries on this Agenda to Roger Bishton, of Democratic Services, County Hall, Bythesea Road, Trowbridge, direct line 01225 713 035 or email roger.bishton@wiltshire.gov.uk

Press enquiries to Communications on direct lines (01225)713114/713115.

This Agenda and all the documents referred to within it are available on the Council's website at www.wiltshire.gov.uk

6. **Partner and Community Updates (Pages 1 - 4)**
Report of Wiltshire Police attached.

9. **Westbury Railway Station Sidings Yard Lane (Pages 5 - 6)**
Map of Westbury Sailing Lake attached.

DATE OF PUBLICATION: Monday 3 October 2016
--



AREA BOARD/TOWN COUNCIL REPORT SEPTEMBER 2016

Hello and welcome to your Community Policing report.

The Community Policing Team (CPT) model will be rolled-out across Wiltshire Police this autumn, starting with the county of Wiltshire on 17 October 2016 and followed by Swindon on 7 November 2016.

This follows a successful trial of the new model in Trowbridge, Warminster, Bradford on Avon, Westbury, Tisbury and Mere. I would like to thank everybody within the community for assisting us during this pilot and providing us with the feedback to enable the continued development of this new model. The structure and ways of working have developed over the last year and this is down to our continued review and also listening to the feedback from our partner agencies and community and this has enabled us to arrive where we are today. We are keen to also improve where possible and so this process will continue and I look forward to future evolutions.

CPT combines Neighbourhood Policing, Response teams and Local Crime Investigators so there is a “one team” approach to community policing. It means there is a bigger team of officers and police staff available to attend incidents and improves communication between teams and departments. It gives the public a better service because issues can potentially be resolved at the first point of contact (101 and 999 call-takers) and provides them with a named officer/police staff member who they will be able to keep in touch with during the investigation. It also encourages officers and staff to take more “ownership” of cases.

There will be seven Community Policing Teams: Swindon North, Swindon West, Swindon South, Wiltshire North, Wiltshire West, Wiltshire East and Wiltshire South.

Each Community Policing Team will be overseen by a Superintendent and will have an Inspector and a Deputy who directly lead that Community Policing Team. The team will be made up of a mix of police officers, community co-ordinators, PCSOs, civilian local crime investigators and Specials Constables.

We will be engaging with the public as the force wide roll-out commences and will welcome feedback about the new model. Please speak to your local officers to find out more or provide feedback, which you can also do at feedback@wiltshire.police.uk You can also find out more, including videos and infographics explaining the new model, on our website <http://www.wiltshire.police.uk/information/community-policing-pilot>

COMMUNITY MESSAGING

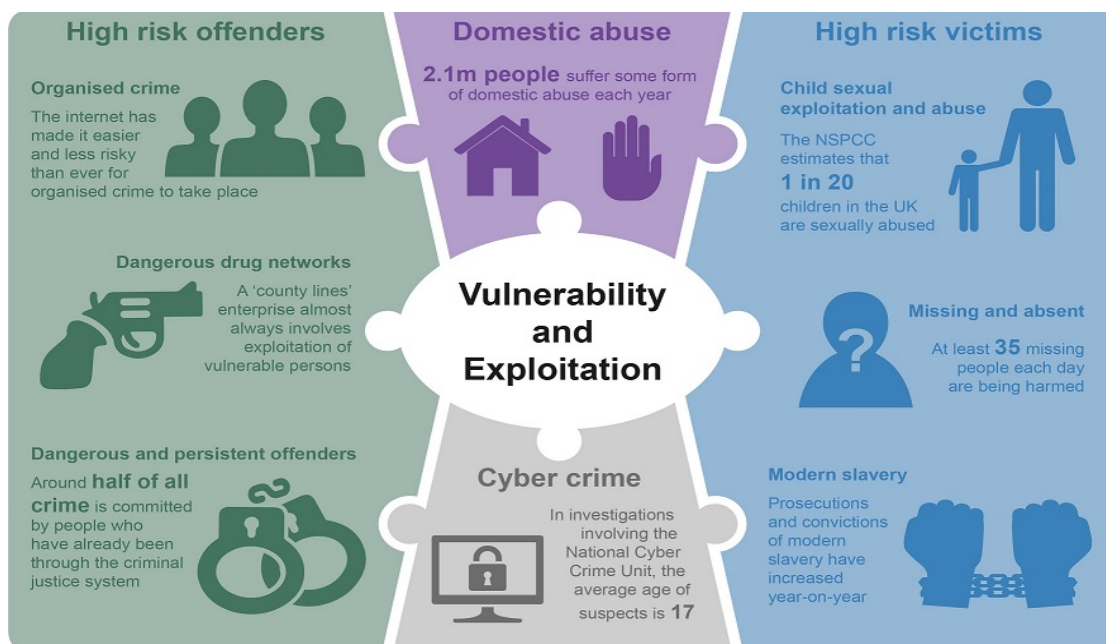
We have been talking a lot publically about Community Messaging over recent months and I have included the link below and would continue to encourage you to spread the message to your communities, encouraging as many people as possible to sign up. We have seen a 20% growth over the recent months and this is to be commended and I want to say thank you for this and the work you have done within your communities to assist us in getting the key messages out there to the right people at the right place at the right time. Please help us take this even further. We are continually reviewing the content of our messages, so if there is any feedback for us, please let us know.

<https://www.wiltsmessaging.co.uk/>

CONTROL STRATEGY

Below is our control strategy for your reference. This focuses on where how we conduct our operational Policing based on the Police & Crime Plan. We will continue to align our resources with the threat/harm/risks presented in line with the control strategy.

- Domestic abuse / Cyber Crime / High risk offenders / High risk victims



LOCAL CRIMES

The number of reported crimes has dropped in the Westbury area over the past two months.

The only series of note was a small spate of Thefts from Vehicles which occurred overnight between 31st of August and 1st September in the Oldfield park area.

It is worth mentioning that we still see occasional thefts from vehicles parked in beauty spots. We advise everyone not to leave valuables in their cars on display at such locations.

The current area priority is on Edwards street where we have had continual reports of Anti-social behaviour involving youths.

We are proactively patrolling the area and the issue has recently been made a sector priority allowing for extra officers to be deployed.

We are also working with the Wiltshire council local youth network with the intention of doing some positive activities with the identified youths.

I would encourage you all to report any matters of ASB in the area through the 101 system.

For a detailed breakdown of the crime in your area visit...

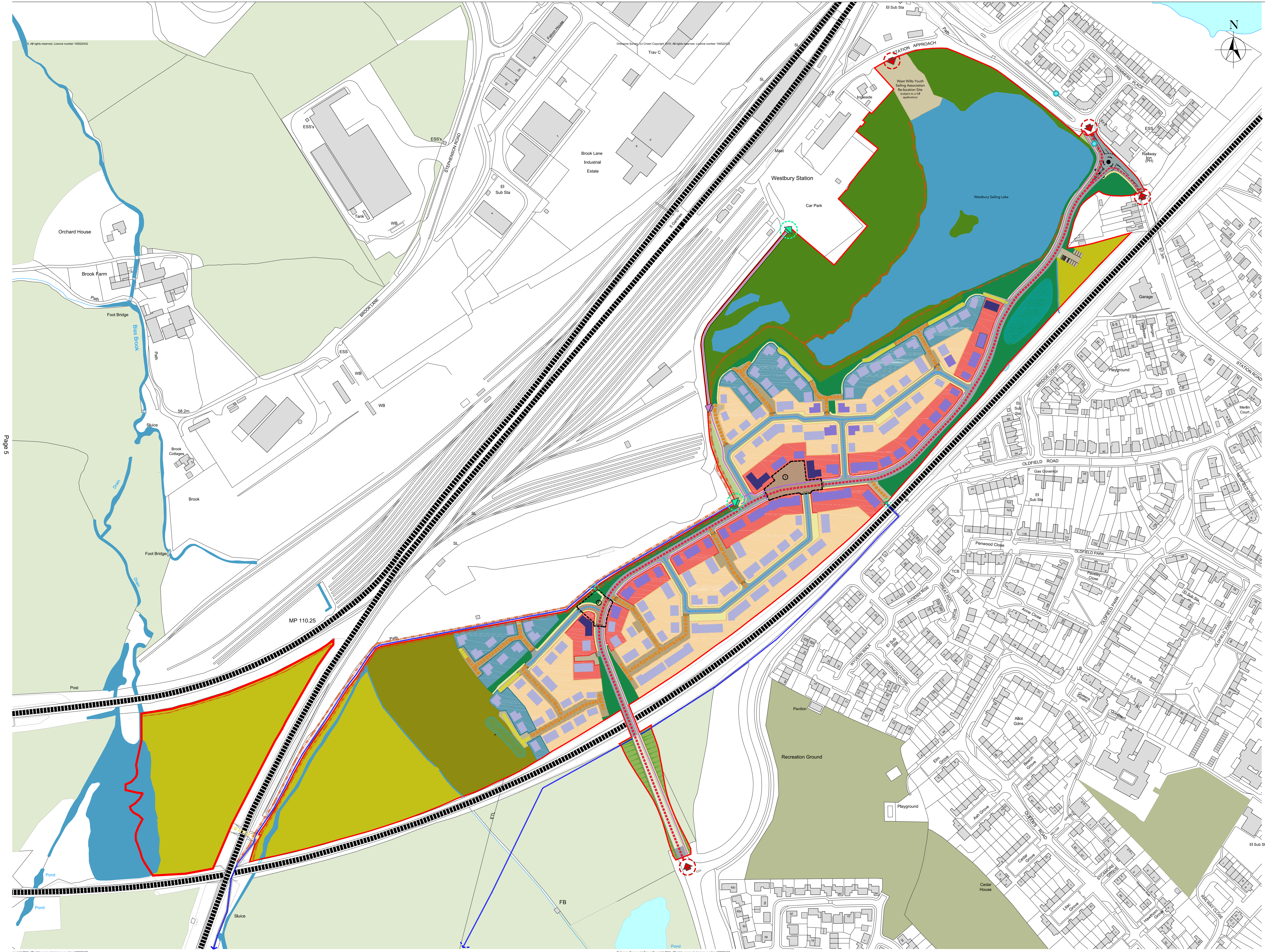
<https://www.police.uk/wiltshire/>

James Brain

Community Policing Team Inspector

Trowbridge & Warminster

feedback@wiltshire.police.uk



- Key**
- Site Boundary
 - Main Access
 - Pedestrian/Cycle Access
 - Potential for future vehicular link to railway station
 - New bus stops location
- Street Hierarchy**
- Primary Street
 - Secondary Street
 - Tertiary Street (Shared surface)
 - Private Drive
 - Main Pedestrian/Cycle Routes
 - Public Right of Way
- Building Heights**
- 3 Storey
 - 2.5 - 2 Storey
 - 2 Storey
- Key Spaces**
- Main Square
 - Secondary Square
 - Shared surface (Block Paving)
- Character Areas**
- Character Area 1: Principal Street
 - Character Area 2: Core
 - Character Area 3: Park Edge
- Landscape and Ecology Areas**
- County Wildlife Site
 - Public Open Space (Including formal provisions)
 - Informal Open Space (Including ecological mitigation and enhancement and multifunctional POS)
 - Green Corridors
 - Dark Corridors for Bats *
- Other**
- Parking area for fishing
 - Existing ponds
 - Proposed Detention basin
 - Watercourse

* Dark commuting habitat corridors for greater horseshoe bats, as well as other bats species, are those shown on the Lighting Impact Study's lux contour diagram to be at or below 1 lux, a requirement stated within the Bat Special Areas of Conservation (SAC) Planning Guidance for Wiltshire.

Page 5

